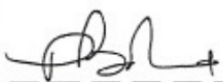
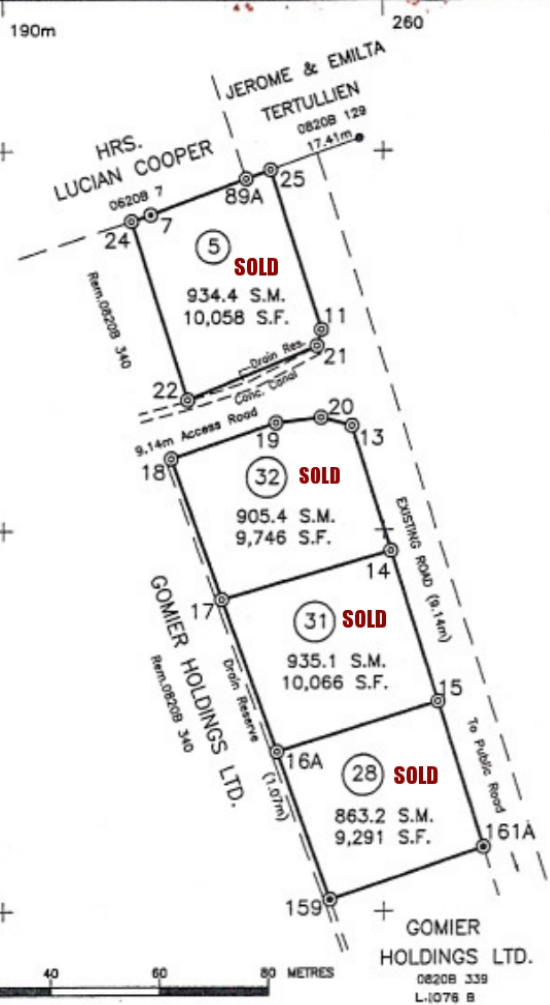
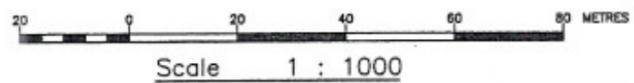


**LODGED** 15 Nov 2007  
**SURVEY OFFICE**  
**SAINT LUCIA**  
 CS  
 RECORD NO. SM487/2007

**MEMO.**  
 Survey was executed between 10th & 29th August 2007.  
 Instruments used were: a Nikon DTM 450 Total Station its Accessories & 30 metre Offset Tape.  
 Reference was made to Plan L-1076B from which grid co ordinates were adopted.  
 D.C.A. Approval No. 1391/03  
 Survey currently forms a part of 0820B 340.

  
 PAUL BOLAND  
 Lic. Land Surveyor



LINE	GRID BEARING	DISTANCE	
		metres	feet
LOT 28			
161A - 159	251 25 12	29.82	97.83
159 - 16A	340 08 10	28.73	94.26
16A - 15	72 47 24	31.05	101.86
15 - 161A	162 37 11	27.99	91.84
LOT 31			
15 - 16A	252 47 24	31.05	101.86
16A - 17	340 07 29	29.92	98.16
17 - 14	74 03 43	32.37	106.20
14 - 15	162 37 11	29.16	95.66
LOT 32			
14 - 17	254 03 43	32.37	106.20
17 - 18	340 07 40	27.50	90.21
18 - 19	71 27 24	20.39	66.90
19 - 20	83 43 32	8.36	27.42
20 - 13	104 56 17	5.88	19.28
13 - 14	162 37 11	23.94	78.53
LOT 5			
11 - 25	342 32 24	31.11	102.05
25 - 89A	250 10 14	4.82	15.80
89A - 7	249 07 23	18.88	61.95
7 - 24	251 32 42	3.72	12.21
24 - 22	162 42 02	34.72	113.90
22 - 21	67 16 18	25.87	84.89
21 - 11	15 41 40	3.15	10.33
13 - 11	342 38 20	18.72	61.40

CASTRIES ST. LUCIA

Plan Showing  
 survey of four (4) lots at MOUNT LE BLANC  
 Quarter of LABORIE  
 made at the instance of  
 GOMIER HOLDINGS LTD.

DRAWING No: L1084 R  
 DRAWN By: Sam Benjamin  
 SURVEYED By: Paul Boland  
 Lic. Land Surveyor

DATE October 17th, 2007

- ⊙ Traverse station, iron in concrete found
- ⊙ Traverse station, iron in concrete put
- Traverse station, wood peg
- Iron in concrete put
- Iron in concrete found